

SafeSide

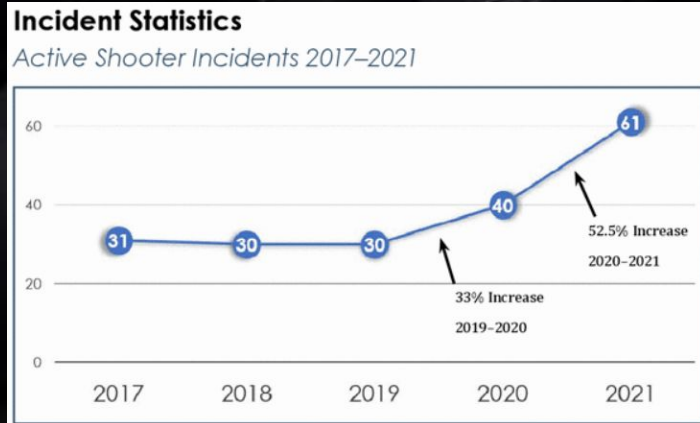
Your personal safety
companion

- Ayush Shejwal
- Kaustubh Negi
- Sreechandh Devireddy
- Sri Ujjwal Reddy
- Manas Gowda
- Siddharth Sanjay



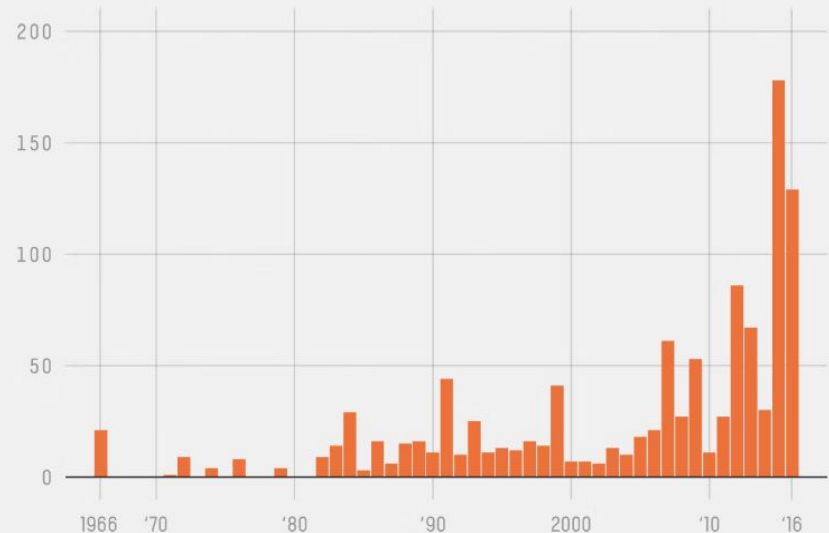
Why is this problem worth solving?

- Public safety is a top priority
- The threat of attacks is increasing
- Because people panic and make fatal decisions.
- The economic impact of attacks can be significant
- Improved emergency response can build trust



Mass shooting deaths are up no matter what data you use

Deaths per year in mass shootings, according to Stanford University's Mass Shootings in America project



FiveThirtyEight

SOURCE: MASS SHOOTINGS IN AMERICA

Problem Statement

How do we guide crowds to good decisions during an attack?

- Traditional emergency response systems may not be effective in guiding crowds during an attack.
- Rapidly changing situations and the spread of misinformation
- A failure to guide crowds to good decisions can have serious consequences, including loss of life, injury, and long-term psychological trauma for survivors.

Introducing Our Solution

- An app designed to help people in times of an Active Shooter emergency.
- Provide safety measures catered to the different possible location settings.
- Guides you with real-time location aided evacuation route.
- Strive to help people stay safe and make the right decisions during emergencies.



Wireless Emergency Alert System

The Wireless Emergency Alert (WEA) system is an alert system that uses the concept of geofencing. It is commonly used by weather organizations to provide potentially life-saving information to people in a defined geographical location.

We can use this service to alert people of a shooting that is taking place. The authorities can use FEMA's IPAWS (Integrated Alert And Warning System) to put out an alert to users around the shooting zone.



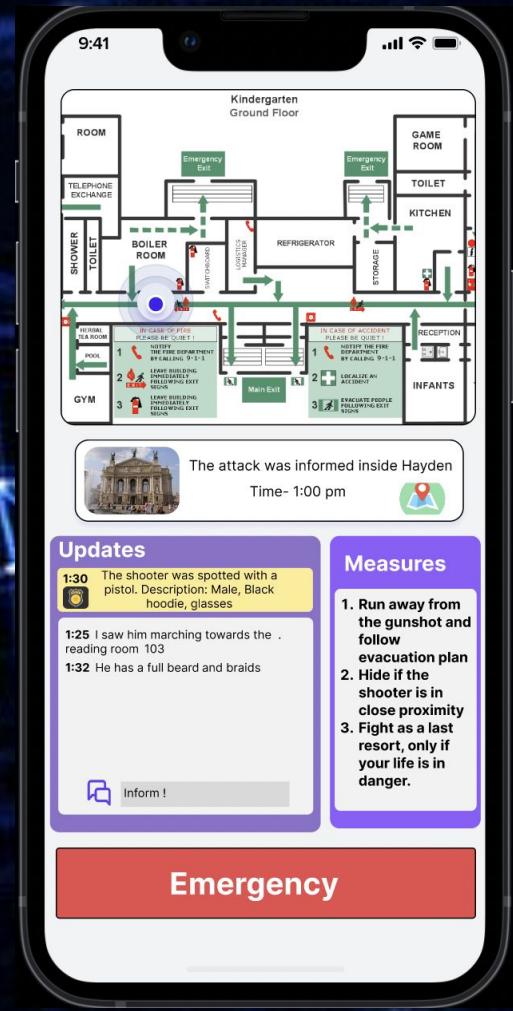
Emergency alert:
Severe
Aug 2, 4:47 PM

National Weather Service:
SEVERE THUNDERSTORM
WARNING in effect for this area
until 5:30 PM CDT for
DESTRUCTIVE 80 mph winds.
Take shelter in a sturdy building,
away from windows. Flying debris
may be deadly to those caught
without shelter.

OK

The SafeSide App

- SafeSide app is a powerful tool designed to help individuals stay safe during an attack. With features like monitored real time updates, the SafeSide app empowers users to make informed decisions.
- Designed with the safety of its users in mind, the SafeSide app is a must-have tool for anyone who values preparedness and security in today's world.

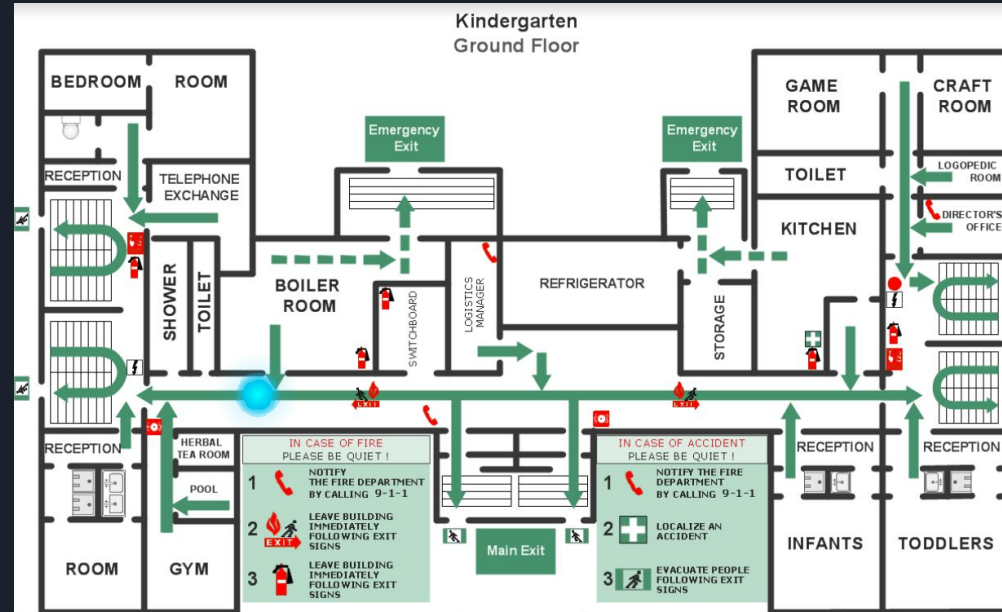




SafeSide Features

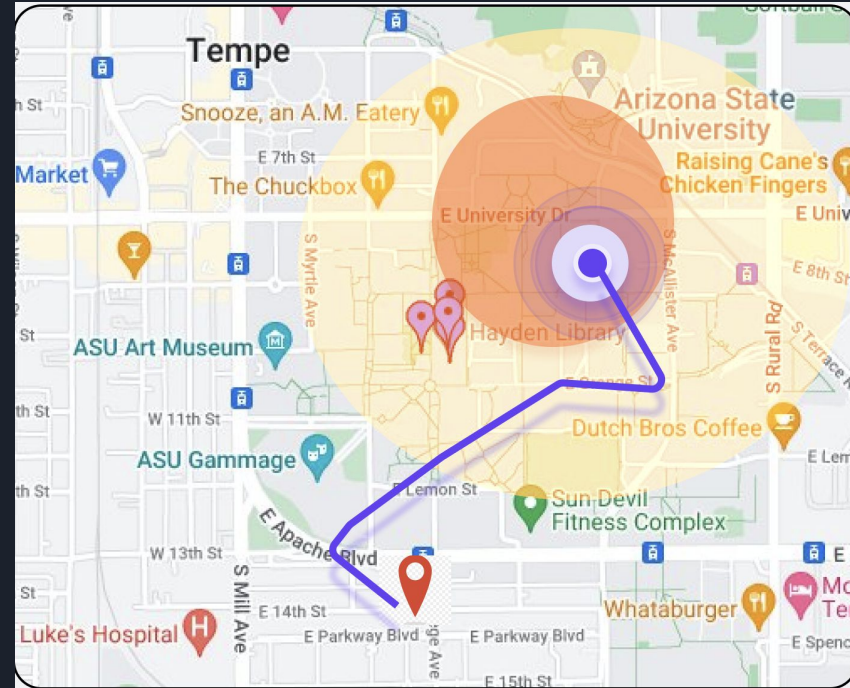
Real-time location assisted Evacuation Plan

- The evacuation plan featured on SafeSide helps users quickly identify the safest route to take in times of attack.
- It contains a BLE Beacon enabled live tracking system which shows you exactly where you are on the evacuation plan map.



Real-Time Outdoor Location Tracking

- The real-time location tracking feature on SafeSide allows users to quickly and accurately identify their location outdoors in times of attack.
- The app is integrated with Google Maps to highlight the best possible evacuation route.



Monitored Real Time Updates



- **Safeside's Monitored Real Time Updates provides a critical line of communication between police and those in danger in that area during an attack.**

Safety Measures

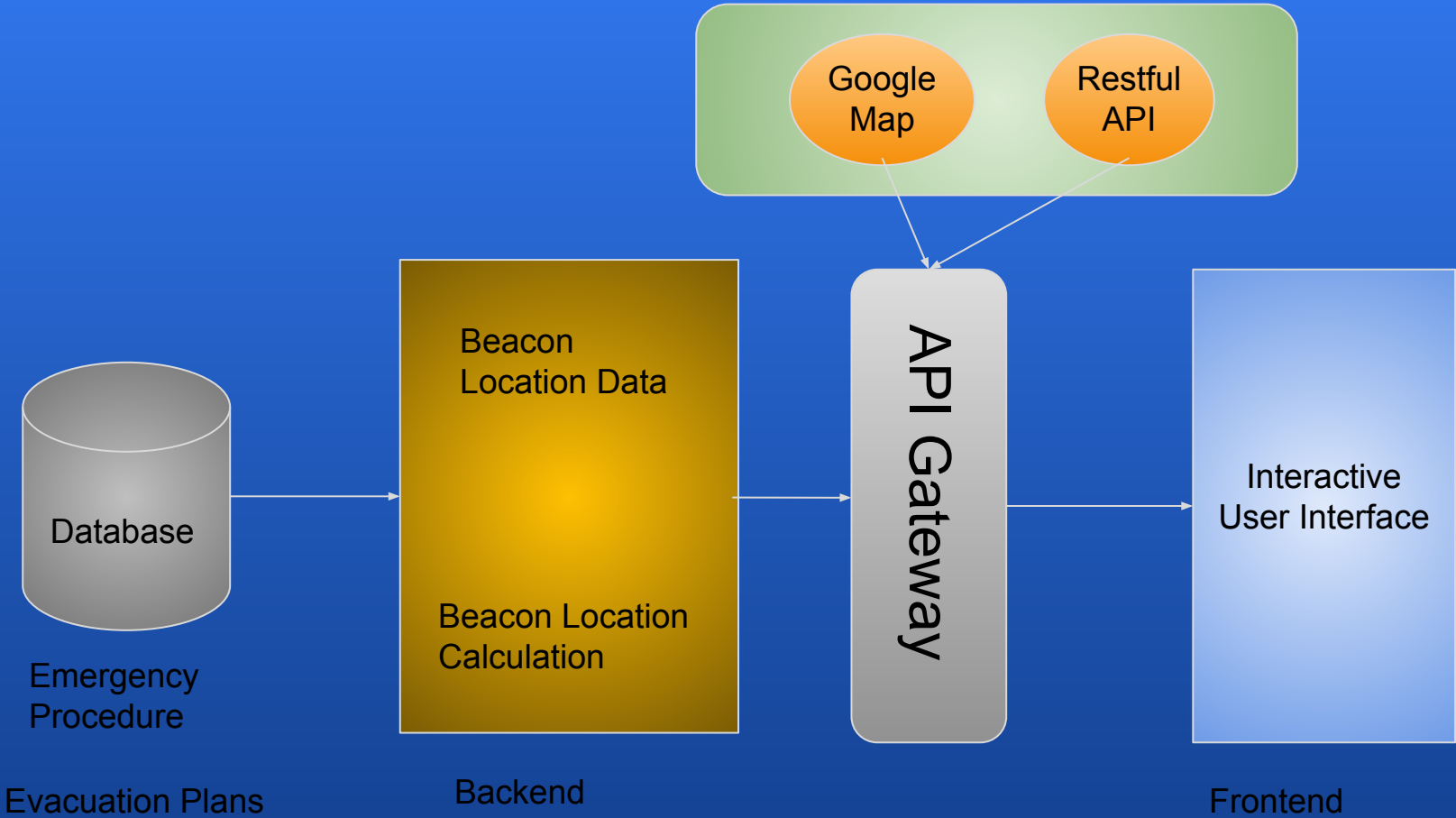


- **Safeside's safety measures provide life saving information and resources to victims during an attack.**
- **They are specified based on the location setting and provide relevant measures to ensure individual safety.**

The Emergency Button

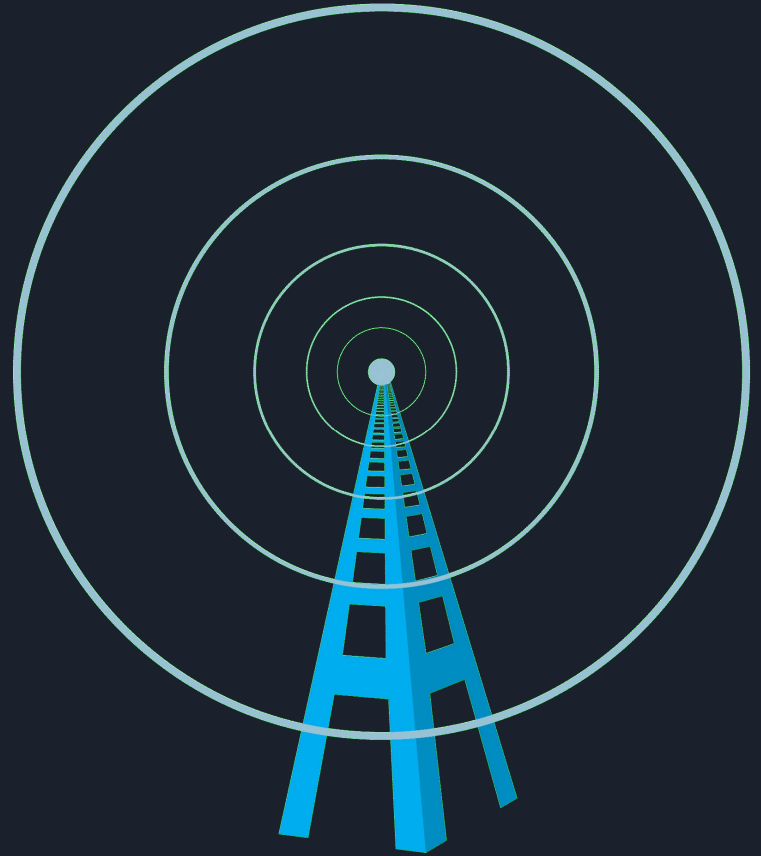
Allows users to:

- Directly dial 911.
- Use the Text-to-911 feature.
- Share accurate current location for immediate assistance.

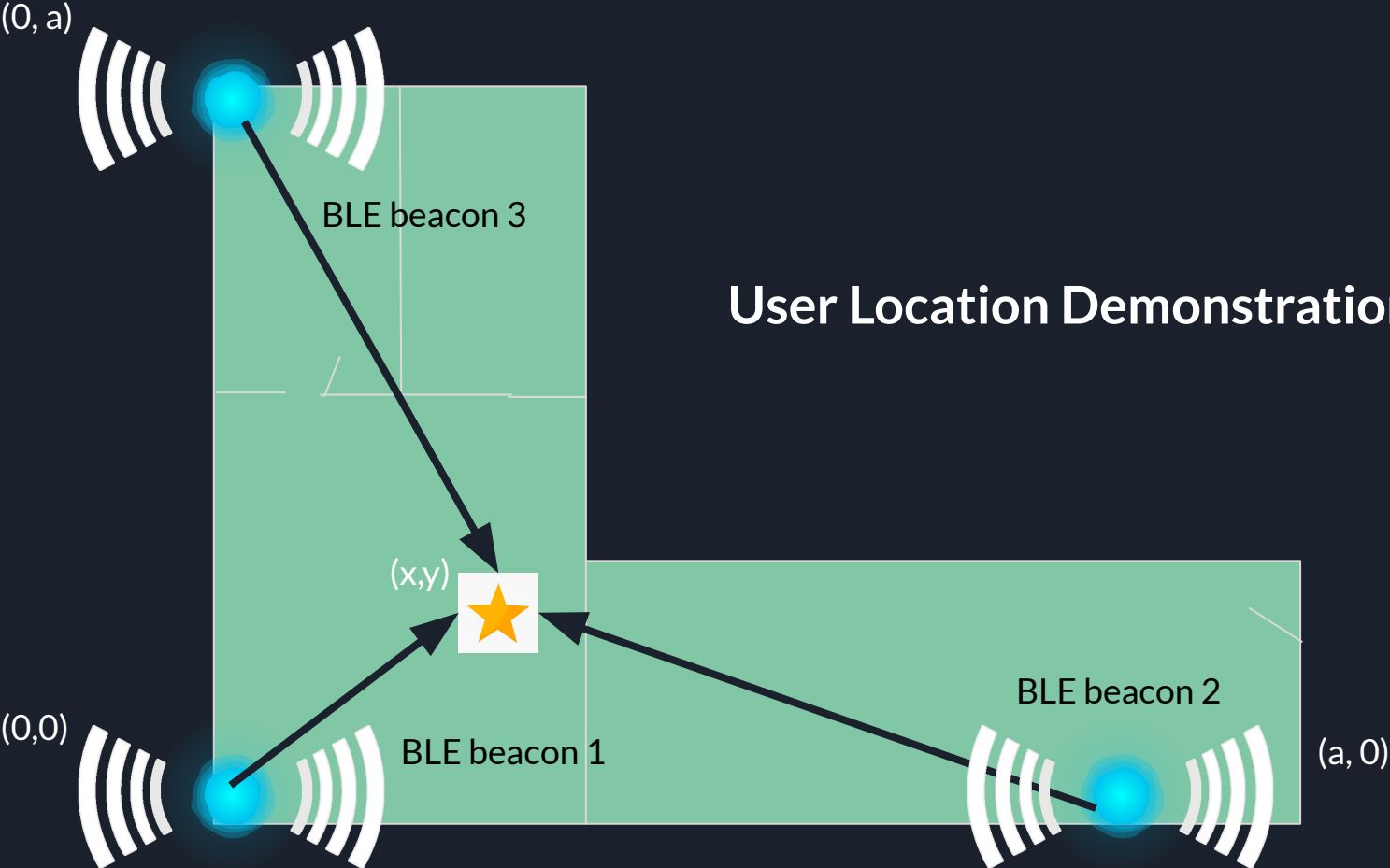


BLE Beacon

- Accurate location of users is important during building evacuations
- Bluetooth beacons are used as a reference point to determine user location
- Beacon locations are superimposed onto a map to guide users out of the building
- Implementation of the technology can help save lives during building evacuations
- At Least three reference points are required to find out the user location to the utmost accuracy



User Location Demonstration



Budget

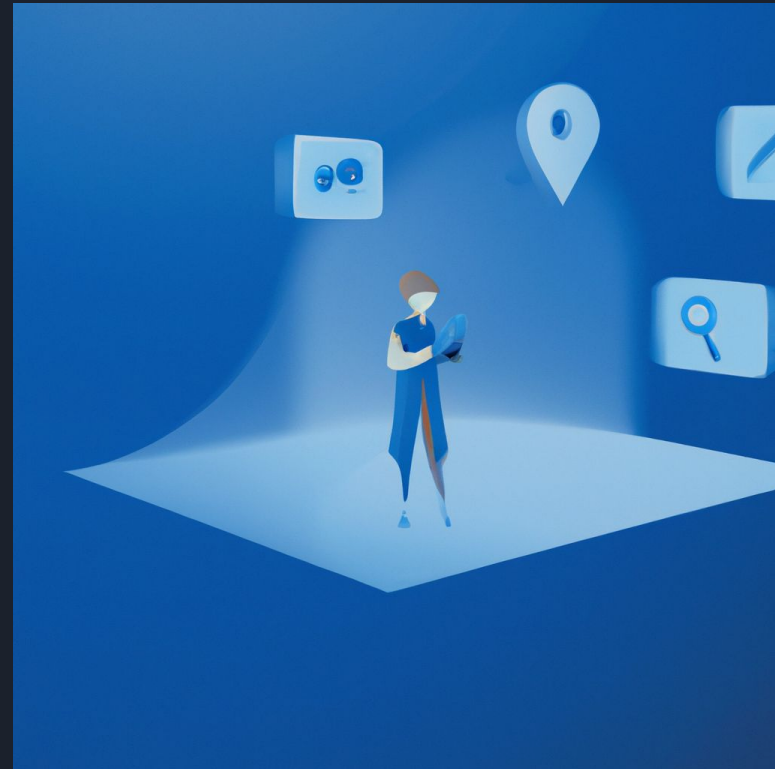
- Cost of BLE beacon (100m range) - \$25 per unit
- Number of beacons needed for average high school (16000 sq. meter) - 20
- Total cost of acquiring beacons - \$500
- Installation cost - \$400 estimate
- Maintenance cost - \$250 estimate

Total cost for beacon installation and maintenance - \$1150 per high school (liberal estimate)

- Our app is extremely cost effective. Considering factors such as integration with google maps, involvement of authorities, technical liabilities (server maintenance), our yearly estimated combined development and maintenance cost is \$10000.


The Benefits and Impact of SafeSide

- SafeSide has very practical and useful features such as evacuation plans with real time current location, the emergency button, monitored real time updates, and safety measures.
- The app will reduce panic and fear among users, leading to more informed and safe decisions.
- The app is a cost-effective and accessible tool for individuals, communities and authorities to increase their preparedness and response to attacks.
- The app can provide a sense of security and comfort to users, knowing that they have a tool to help them stay safe during an attack.





Future Implementation

- 
- Integrate the Google Maps API with the backend and frontend
 - Integration of Bluetooth Location Beacon with evaluation plan so that there is a fail-safe situation in every scenario
 - We plan to implement this solution in stadiums, malls, museums as well as places of worship

Stay Safe with SafeSide!